

Worcestershire County Council.
Education Committee.



THE COUNTY HIGH SCHOOL,
OLDBURY.

PROSPECTUS.

Worcestershire  County Council.

Education Committee.

THE COUNTY HIGH SCHOOL,
OLDBURY.

Postal Address :
MOAT ROAD,
LANGLEY,
BIRMINGHAM.

Telephone : BROADWELL 1331.

E 8342.



THE N.W. VIEW OF THE SCHOOL.

GOVERNING BODY :

CHAIRMAN :

COUNTY ALDERMAN W. T. DAVIES, J.P.

Representing the Worcestershire Education Authority :

MRS. W. K. ADAMS.	COUNTY COUNCILLOR R. M. HADLEY, J.P.
MRS. E. H. BENCE, J.P.	A. C. JEPHCOTT, ESQ.
COUNTY ALDERMAN W. T. DAVIES, J.P.	F. F. LE SOUEF SIMPSON, ESQ.
MRS. L. DAWES, J.P.	COUNTY ALDERMAN W. F. VERNON.

Representing the Oldbury Borough Council :

COUNCILLOR G. H. PRICE.	ALDERMAN H. H. ROBBINS.
ALDERMAN B. T. ROBBINS, J.P.	COUNCILLOR G. W. ROSE, J.P.
	ALDERMAN MRS. L. A. SMITH.

Representing Birmingham University :

MISS F. M. BUCHANAN, M.A.

Co-opted Member :

THE REV. H. C. HAWKINS.

DIRECTOR OF EDUCATION :

A. W. PRIESTLEY, B.C.L., County Buildings, Worcester (Telephone: Worcester 1200).

STAFF.

HEADMASTER :

C. C. HOWARD, B.A., B.Sc., Ph.D., (Imperial College of Science and Technology, and University College, London).

ASSISTANT MASTERS :

T. L. DAVIES, M.A., (Trinity College, Dublin), B.Sc., (Wales). Board of Education Certificate. Senior Master. Physics and Music.
K. D. HOPKINS, B.Sc., (Birmingham), F.R.A.S. Chemistry.
C. S. HOWELLS, M.A., (Wales). Board of Education Certificate. Geography and Economics.
C. KNIGHT-COUTTS, M.C., Physics and Geography.
J. B. RICHARDS, M.A., (London), B.Sc., (Birmingham). Mathematics.
R. A. F. NEWTON-HEARN, B.A., (London). Teachers' Diploma for German. Board of Education Certificate. German.
B. C. PEARSON, M.A., (Leeds). Diploma in Education. English.
F. L. HAWLEY, City and Guilds of London Institute. Woodwork and Metalwork.
F. JOHNSTONE, B.Sc., Ph.D., (Liverpool). Board of Education Certificate. Chemistry.
A. M. CONGDON, Board of Education Certificate. Diploma in Physical Education and School Hygiene. Boys' Physical Training.
J. GRIPTON, Teachers' Diploma in Commercial Subjects. Commercial Subjects.

ASSISTANT MISTRESSES :

MRS. L. G. QUAYLE. Certificated Art Mistress. Senior Mistress.
MISS D. WILLIAMS, B.A., (Liverpool). Board of Education Certificate. Mathematics.
MISS E. M. FOSTER, B.A., (Birmingham). Diploma in Education. French.
MISS G. JONES, M.A., (Birmingham). Diplomas in Education and Social Study. English, Latin and Dramatics.
MISS J. M. FRENCH, B.A., (Birmingham). Diploma in Education. French.
MISS J. L. DAVIES, Teachers' Diploma in Domestic Subjects. Domestic Science.
MISS D. M. ALLEN, B.Sc., (Birmingham). Diploma in Education. Biology.
MISS E. M. LEWIS, M.A., (Leeds). Diploma in Education. History.
MISS C. PARRY, B.A. (Wales). Diploma in Education. History.
MISS F. D. TWEEDIE. Bergman Osterberg Diploma. Girls' Physical Training and Girl Guides.

4

The School Buildings.

THE COUNTY HIGH SCHOOL, which, from its foundation in 1904 until 1926, was housed in the Technical School, Oldbury, under the name of the Oldbury Secondary School, is now situated in MOAT ROAD, LANGLEY. The new buildings, officially opened in October 1926, are surrounded by some 12½ acres of playing fields, and are of the most up-to-date type of school design. The Architect Mr. A. V. Rowe, of Worcester, has produced a school which combines all the essentials for efficient working in healthful surroundings. The beautiful block of buildings is in the form of a parallelogram, about 280 feet long and 200 feet wide, surrounding a large quadrangle and two square gardens. The buildings include a large Assembly Hall, Library, fifteen classrooms, Art Room, two Chemical Laboratories, Lecture Room, two Physical Laboratories, Preparation Room, Dark Room, Biological Laboratory, Workshop, Domestic Science Room, Gymnasium, Dining Hall, Kitchen, Servery, Staff Rooms, Store Rooms, Cloakrooms and Lavatories. The heating is by the low pressure hot water system, two boilers being installed in separate boiler rooms. The buildings are lighted by electricity, and electric power is laid on for use in the laboratories and workshop. Both gas and electricity are used in the Domestic Science Room, Laboratories and Kitchens for experimental work and cooking. There is an open-air swimming bath in the school grounds.

5



THE ASSEMBLY HALL.

Object. The School provides, for boys and girls from 10 years of age upwards, a sound general education to prepare them for a professional, commercial or scientific career. In addition to Worcestershire children, boys and girls from Smethwick, Birmingham, Staffordshire and Warwickshire may be admitted.

Curriculum. The courses of study in the School are designed so as to combine a broad cultural education with specialised training according to the future career of each pupil. As far as possible, the course for each individual is designed with a view to his or her future, there being considerable specialisation in the upper classes of the School, although the lower classes work on a fairly uniform broad curriculum designed for general education. The subjects studied include English, History, Geography, Latin, French, German, Mathematics, Applied Mathematics, Chemistry, Physics, Biology, Art, Book-keeping, Shorthand, Typewriting, Economics, with Domestic Science for girls, and woodwork and metalwork for boys. Pupils are normally able to qualify for the General School Certificate and for the Higher School Certificate of the Joint Matriculation Board of the Northern Universities. These Certificates enable leavers to enter many professions without further tests, or to proceed to a University. Success in the Higher School Certificate Examination gives exemption from the Intermediate B.A. and B.Sc. Examinations. If commercial subjects are included in the



THE LIBRARY.

Curriculum.
(contd)

course of study, leavers are enabled to enter upon excellent business careers, or may compete for posts in certain branches of the Civil Service. The Science Department trains pupils for scientific careers in industry as chemists and physicists. The five laboratories, with their associated lecture and preparation rooms, are well equipped for practical work in Chemistry, Biology, Electricity and other branches of Physics.

**School
Activities.**

Unless exempt by medical certificate, all boys and girls take part in Physical Training and Games. The Gymnasium is fully equipped with modern gymnastic apparatus, shower baths and cloakrooms. The school swimming bath is near the Gymnasium, while the playing fields of approximately twelve and a half acres are adjacent to the School Buildings.

There are opportunities for pupils specially interested in Music, whether vocal or instrumental. All are taught singing. Pupils in the upper forms are members of the Joint Societies—Literary, Debating, Musical and Dramatic.

Girls may join the School Company of Girl Guides which meets every Friday during the School year, when work is done for the various badges of the Organisation.



THE JUNIOR PHYSICAL LABORATORY.

**School
Activities.**
(contd)

The School Library, originally provided through the generosity of G. S. Albright, Esq., has developed very considerably, and is a prominent feature of the School. It includes a Reference Library, a Senior Lending Library, a Junior Lending Library, various departmental libraries, and a section for magazines and periodicals. The various sections include books on almost all subjects of value or interest to the pupils of the School, and in the section for periodicals between twenty and thirty periodicals are regularly supplied, in order to provide good reading over a wide field of interest for all pupils of the School. The Reference Library and Reading Room are open every day between morning and afternoon school sessions and until 5 p.m.

**Admission and
Withdrawal.**

Admission is by the County Secondary Schools Admission Examination held annually in March. Applications to sit for this Examination should be made early in February. Forms of application may be obtained from the Director of Education, County Buildings, Worcester, or from the Headmaster at the School. Pupils are normally admitted between the ages of ten and twelve years. Any children suitable, and admitted by the Headmaster before they reach the age of ten years, are required to compete in the annual County Examination referred to above when they attain the age of 10 years. Such children will be subject to exclusion if they fail to reach a certain standard in that Examination.



THE JUNIOR CHEMICAL LABORATORY.

**Admission and
Withdrawal.**
(contd)

On the admission of new pupils, the County Education Authority require the parent or guardian to sign a Form of Entry, by which the parent or guardian agrees :

1. To conform (and to see that the child conforms) with all School rules and regulations from time to time in force.
2. To pay in advance, at the beginning of each term, the School fees now charged (or such other reasonable fees as may from time to time be fixed by the Local Education Authority with the approval of the Board of Education), except to the extent to which for any period the child holds a Scholarship or a Special Place or other award giving exemption or part exemption from such fees.
3. To keep the child at the School at least until the end of the School year (*i.e.* until July) in which the child reaches his (her) sixteenth birthday, and if the child be withdrawn at an earlier date without the sanction of the Local Education Authority (such sanction not to be withheld for good and sufficient reasons proved to the satisfaction of the Authority, such as removal from the district, the prolonged illness of the child, or the transfer of the child to another School accepted by the Authority as suitable for the purposes of this Agreement), to pay the Authority as liquidated damages, if required to do so, a sum of £1 10s. 0d. for each term of



THE BIOLOGICAL LABORATORY.

**Admission and
Withdrawal.**
(contd)

the above mentioned period which shall be unexpired at the the date of the default, such damages becoming due and payable in one sum at the date of default.

4. To give notice in writing to the Headmaster before removing the child from the School at the end of the above mentioned period or thereafter, not later than June 1st for removal at the end of the Summer Term, or November 1st for removal at the end of the Autumn Term, or March 1st for removal at the end of the Spring Term, such notice to take effect at the end of the term only, or in default of such notice, to pay the sum of £1 10s. 0d.

No pupil will be allowed to remain in the School unless he or she maintains a satisfactory standard of behaviour, diligence, progress and attendance.

Fees.

Subject to the reductions mentioned below in relation to "Special Places," fees for tuition, books and stationery are calculated on a basis of £12 per annum for pupils resident in the Administrative County of Worcester, or in the City of Birmingham. For other pupils an extra fee of £3 3s. 0d. per annum is charged. Where two or more children of the same family attend the School at the same time, as full fee paying pupils, a reduction of 10/- per term will be allowed for the second or subsequent child. **Fees are payable**



THE ART ROOM.

Fees.
(contd)

in advance at the beginning of each term. Payment of the fees should be made to the Clerk to the Governors. Cheques should be made payable to the "Clerk to the Governors, the County High School, Oldbury." No deduction from any fees is as a rule made for absence. If a pupil is present during any portion of the term, the full fee for that term is payable.

Text books which are supplied on loan to the pupils without charge must be returned in good condition when required.

Parents or guardians are required to make good any damage to or loss of, school property.

The only extras are 1/6 per term subscription to the Amalgamated Clubs for Sport, and 2/6 per term for girls who elect to join the Girl Guides.

Special Places.

All places in the school are "Special Places," as far as entrants from September 1937 and onwards are concerned. That is to say, provided the total parental income does not exceed a certain figure, the fees payable will be reduced according to a sliding scale depending on that income and the number of dependent children in the family. Particulars of the Special Places, and the income scales under which they are awarded, will be found in the County Scholarship Handbook, copies of which may be obtained from the Director of Education or from the Headmaster, free of charge.



ROOM 3.

Terms and Hours.

The School Year is divided into three terms :—

Autumn Term	—	September to December.
Spring Term	—	January to April.
Summer Term	—	May to July.

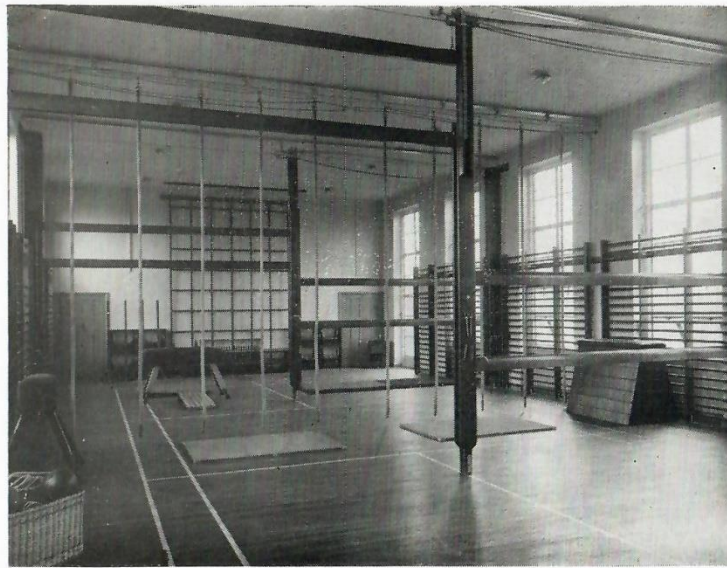
Morning School is from 9.0 to 12.45 with 15 minutes break at 11.10. Afternoon School is from 2.10 to 4.10. There is no school on Saturdays.

General Regulations.

Regularity and punctuality of attendance are essential. No cause except illness is recognised as a sufficient excuse for absence, unless permission has been obtained **previously** from the Headmaster.

In every case of absence a written explanation from the parent or guardian must be sent, for the boys to the Senior Master, for the girls to the Senior Mistress.

Every pupil must bring after each holiday, a certificate of freedom from infection. No pupil from a house where there is, or recently has been any case of infectious disease, is allowed to attend School without special permission of the Medical Adviser or the Headmaster. The Headmaster must be advised immediately of any such contact.



THE GYMNASIUM.

**General
Regulations.**
(contd)

Homework is regulated in accordance with the recommendations of the Board of Education. Parents are requested to see that the Homework Time Table is strictly followed. If the time allotted be greatly exceeded or the work be insufficient, parents should inform the Headmaster.

All pupils must wear the School colours, caps and hats, and be provided with the standard equipment for various School activities. Bicycle sheds with racks are provided for pupils who cycle to School. Bicycles must be properly placed in the racks and not left standing about.

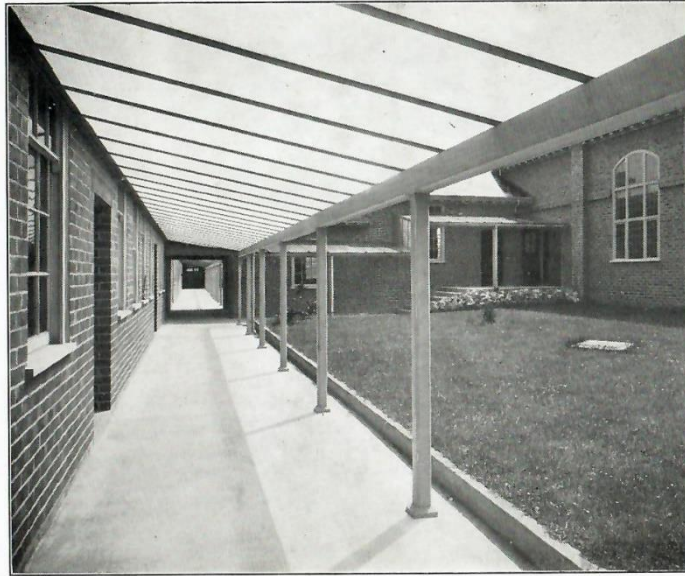
By arrangement with the Midland Red motor service, private motor buses provide regular daily service for pupils living in the Blackheath and Warley areas, both before and after school hours.

Meals.

All meals are taken in the Dining Hall. Pupils living at a distance may have hot dinners at School at midday, or may bring cold lunch with them. Dinner tickets are 9d. each, or 5 for 3/6, and Service tickets for use of cups, plates, glasses, etc., for those who bring cold lunch are 5 for 3d.

Interviews.

The Headmaster will be pleased to see parents at the School at any time, preferably by appointment, on all matters concerning the education and welfare of their children. Parents who wish to do so may see the Senior Mistress.



THE NORTH CORRIDOR.

Scholarships.

The Oldbury Charity Trustees offer about 6 awards annually to pupils who are over 14 years of age, and have been at the School at least 2 years. These Scholarships may include all school fees, and where necessary carry a maintenance grant. They are awarded to pupils living in the Borough of Oldbury, whose work and progress in the School have been highly satisfactory, and who need financial assistance. County Special Place Holders may be recommended for the maintenance grant. The Scholarships are tenable for 2 years, with possibilities of extension.

One or more Scholarships are awarded each year by the Moore and Powell Trustees to children resident in the Parish of Warley. These Scholarships defray all expenses for fees, books and stationery and are tenable for four years.

A Scholarship is offered from time to time by the Trustees of the Chance Educational Foundation to children of parents in the employment of Messrs. Chance and Hunt, Limited.

A Scholarship founded in memory of the late Chairman of the Governors, Mr. T. Quayle, is offered every four years to pupils attending the Abbey Road Council School.

Pupils of the School who have passed the School Certificate Examination and who are 16 or nearly 16 years of age may apply for a County Intermediate Scholarship, if they are in need of assistance to enable them to remain at the School for advanced work.

University Scholarships.

The Trustees of the Albright Scholarship Trust offer a University Scholarship each year to a pupil of the School who wishes to enter upon a University career. Each scholarship is normally of the value of £40 per annum and tenable for three years.

A Scholarship may also be awarded from time to time by the Oldbury Charity Trustees to enable pupils to carry on their work at a University. When available, it is awarded on the best Examination result of the year amongst the residents of Oldbury. Further particulars may be obtained from the Headmaster.

Major Scholarships, value not exceeding £50 per annum, are offered by the Worcestershire Education Authority. They are tenable at any recognised University, or at an approved Physical Training College. Further particulars may be obtained from the Director of Education, County Education Office, County Buildings, Worcester.

State Scholarships tenable at a University, covering fees and providing a maintenance grant up to £100 per annum are awarded each year by the State on the results of the Higher School Certificate Examination. Further particulars may be obtained from the Headmaster.

Loans to Intending Teachers.

The Worcestershire Education Authority have established a system of loans to Worcestershire students entering a recognised Training College or University Training Department. Particulars may be obtained from the Director of Education or from the Headmaster.

Old Students' Association.

The O.S.A. was formed for the purpose of preserving the connection of old pupils with the School. During the winter months, meetings are held at the School on the second Saturday in each month, in the evenings. There are also flourishing Football and Hockey Clubs connected with the Association. Any old student who is not a member should communicate with the Headmaster.

Dress and Equipment Regulations for Boys.

General.	All boys must wear the School Cap and School Tie when coming to, or leaving the School. Stockings in school colours may also be worn. Parents are advised to dress their boys in a grey suit. The School Blazer is a standard item in the equipment. A towel is essential for use after using the showers of the Gymnasium or after football.
Football.	Knickers, white or navy. School jersey. Football boots. Stockings in school colours preferable. Vest. Boys must have a change if a vest is worn during games.
Cricket.	White trousers. Cricket shirt. Blazer. White rubber shoes or boots with studs.
Gymnasium.	White cotton vest, sports pattern. Surname in black wool letters at least one inch high across chest. White Gymnasium knickers, elastic top. White rubber shoes.

Chemistry.	Brown coat—"cow-gown pattern"—or black Italian cloth apron with bib, and sleeve protectors with elastic top and bottom.
Woodwork.	White apron with bib, in any strong white material.
Important.	<ol style="list-style-type: none">1. All articles must be clearly marked with the owner's name before they are brought to the School. Cash's names are strongly recommended.2. School uniform must always be worn on the School premises and grounds.

Dress and Equipment Regulations for Girls.

- Outdoor Winter.** Navy Coat "Wilwer."
Black velour hat with school hatband.
Black shoes and stockings.
Gloves must be worn with coat.
- Summer.** Raytex frock and knickers (pattern decided by the School).
Silestia fawn stockings.
Summer hat, as authorised, with school hatband.
Blazer in school colours.
Cresco badge to be worn on both hats.
- Indoor.** Navy tunic, regulation length, with knickers to match in colour.
Green girdle.
White poplin blouse, regulation type with collar and long sleeves.
School tie.
- For Gymnasium.** Navy shorts. White linings.
White aertex blouse.
White plimsolls and white socks.
Towel.

- For Games**
- Winter.** Hockey boots are advised.
Hockey stick.
Black plimsolls.
- Summer.** Tennis racket.
Swimming suit and bathing cap.
- For Domestic Science.** White overall.
- For Chemistry.** A black Italian cloth overall. Long sleeves with elastic at wrist.
- For the Cloakroom.** A large bag to hold plimsolls, etc., and a change of stockings.
- Important.**
1. All articles must be clearly marked with the owner's name before they are brought to the School.
Cash's names are strongly recommended.
 2. School uniform must always be worn on the school premises and grounds.
 3. Jewellery of all descriptions is prohibited.

Information concerning dealers who supply the standard dress and equipment may be obtained by application at the School.

PA 0050